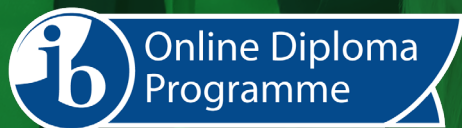


ONLINE IB DIPLOMA PROGRAMME PILOT



“A unique, **100% online** high school experience”

TABLE OF CONTENTS

PROGRAM OVERVIEW	2
THE ONLINE IBDP PILOT	3
AOBA-JAPAN INTERNATIONAL SCHOOL	4
AOBA GLOBAL CAMPUS	5
IB DIPLOMA PROGRAMME	6
FAST FACTS & ENTRY CRITERIA	7
REGIONS	9
WHO IS THE ONLINE IBDP FOR?	10
HOW DOES ONLINE LEARNING WORK?	11
<hr/>	
PROGRAM DETAILS	12
CURRICULUM AND GRADUATION REQUIREMENTS	13
SUBJECT GROUPS	14
SUBJECT DESCRIPTIONS	15
SAMPLE SUBJECT SELECTIONS	17
CORE REQUIREMENTS	18
ACHIEVE A BILINGUAL DIPLOMA	19
EXAMS & JAPANESE LANGUAGE AND CULTURE	21
EXTRACURRICULARS & SUMMER STUDY ABROAD IN TOKYO	22
AFTER SCHOOL PROGRAMS & STUDENT LED CLUBS	23
INTERNSHIPS	24
HEALTH AND WELLBEING	25
CALENDAR AND SCHEDULE	26
DAILY TIMETABLE	27
A DAY IN THE LIFE OF AN ONLINE IBDP STUDENT	28
TWO YEAR PROGRAM SCHEDULE	29
GRADUATION	30
<hr/>	
KEY TO UNIVERSITY	31
ACCREDITED AND RECOGNIZED & LIST OF UNIVERSITY ACCEPTANCES	32
UNIVERSITY GUIDANCE	33
<hr/>	
FREQUENTLY ASKED QUESTIONS	34
<hr/>	
TUITION AND FEES	37

PROGRAM OVERVIEW



THE ONLINE IBDP PILOT

High school students throughout the Asia Pacific region now have the opportunity to achieve the globally recognised IB Diploma 100% online via Aoba Global Campus (AGC), part of the Aoba-Japan International School Group. Developed as an innovative pilot project in cooperation with the International Baccalaureate Organization (IBO), the Aoba Online IB Diploma Programme (IBDP) is uniquely designed to support students to complete their studies remotely as part of a diverse community of international students.

The Aoba Online IBDP prepares students for academic success and upon completing the program students will be eligible to study at leading universities around the world, facilitated by Aoba's expert faculty and a range of student support services.

The Online IBDP Pilot is part of Aoba and the IBO's shared vision for high quality international education: making it more accessible, flexible, inclusive, and convenient in order to support students to pursue their passions and succeed in their endeavours both during and beyond their high school careers.

To that end Aoba's Online IBDP Pilot leverages cutting edge learning technologies and modern education approaches to deliver an experience that brings the success of our on-campus programs to online students, built around how today's high school students communicate, collaborate, and learn in a hyperconnected world.

AOBA-JAPAN INTERNATIONAL SCHOOL

Aoba-Japan International School was founded in 1976 in Tokyo and has since expanded to 10 campuses across the Tokyo Metropolitan Area including a network of English-Japanese bilingual preschools. As Japan's largest international school group, Aoba serves a diverse community of both Japanese and international students and families, represented by over 46 different nationalities. Aoba's focus is on academically rigorous, student-centered, flexible, and inclusive international education and our utmost goal is to adapt our educational programs to the needs of every student in order to support their unique goals and dispositions.

Aoba-Japan International School is an IB World School officially authorized to deliver the IB PYP, MYP, and DP programs. Aoba's programs and high school diplomas are also accredited by the Council of International Schools (CIS) and the New England Association of Schools and Colleges (NEASC). This overlapping international accreditation not only assures the highest quality of internationally recognised education, but also provides Aoba graduates with the ability to enter top global universities across North America, Europe, Asia and elsewhere, ensuring not only eligibility but a highly competitive academic portfolio.





Aoba GLOBAL CAMPUS

Aoba Global Campus is an online extension of Aoba-Japan International School, making the high quality, student-centered education programs which Aoba has become renowned for available to even more students around the world.

More than just an online learning platform, Aoba Global Campus is a truly international community of students, educators, and families. Reflecting Aoba's transformative philosophy of education and commitment to innovation, our Global Campus organizes and guides the entire online schooling experience from start to finish by leveraging cutting edge technology and a unique, Aoba-developed approach to teaching and learning that is specifically tailored to the needs of online students and families.

Aoba Global Campus programs and courses are delivered by qualified teaching faculty with specializations in online and blended learning, instructional design, and related fields in order to provide the most engaging and supportive online school experience possible.

Aoba Global Campus students and families also benefit from a variety of school supports: the same breadth and quality as provided on Aoba's physical school campuses and including university and career guidance, counseling services, teacher office hours, and tutoring support.

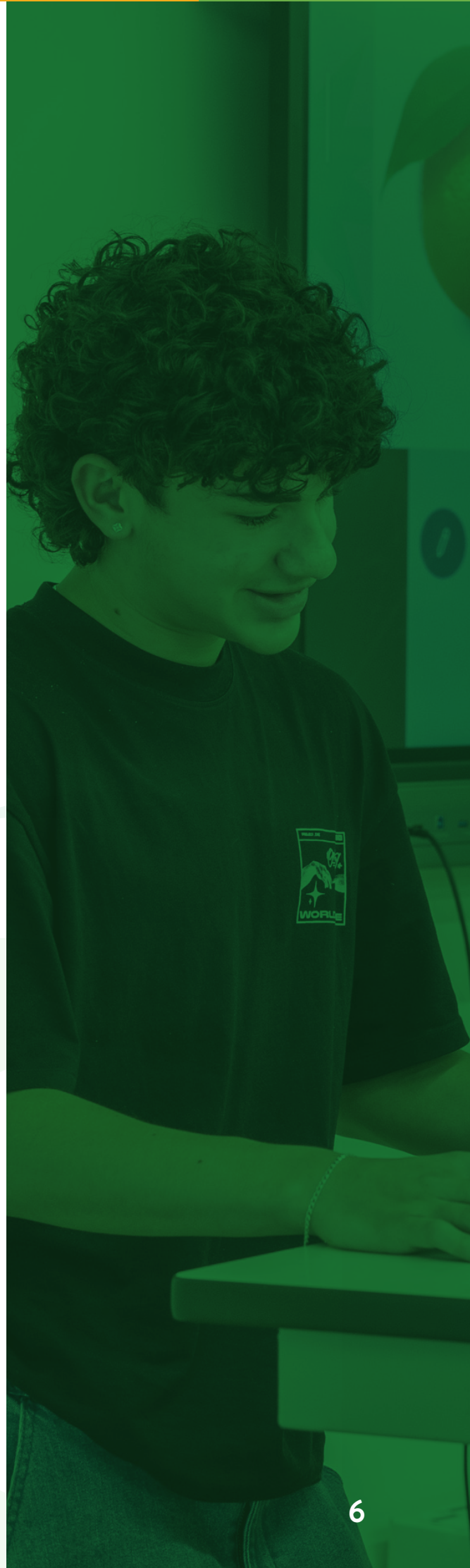
Finally, Aoba recognises that school is about more than just academics: it's about the friendships made along the way and the holistic development of adolescents into capable, independent, healthy young adults. For this reason Aoba Global Campus offers a variety of extracurricular, enrichment and social activities to our students and families including optional study abroad trips, online after school programs, student clubs and more.

IB DIPLOMA PROGRAMME

The International Baccalaureate Diploma Programme (IBDP) is a two-year educational programme aimed at 16-to-19-year-olds around the world. The programme provides an internationally accepted qualification for entry into higher education and is recognized by universities worldwide. Students who enrol into Aoba-Japan International School's Online IBDP can complete the two-year programme 100% online, and may also avail of a variety of optional extracurricular and experiential learning opportunities including after school clubs, study abroad programs, internships and more. Aoba's Online IBDP is available to students residing within three hours of Japan Standard Time, which encompasses most countries and territories in the wider Asia-Pacific region.

WHY IBDP?

The International Baccalaureate Diploma Programme (IBDP) is more than just a pathway to university; it is a globally recognized standard of excellence in education that prepares students for success in a rapidly changing world. The IBDP fosters critical thinking, intercultural understanding, and a commitment to lifelong learning, offering a rigorous and balanced curriculum that challenges students to reach their full potential. With a focus on both academic and personal development, the IBDP equips students with the skills they need to thrive in higher education and beyond, making them stand out in university applications and future career pursuits. By choosing the IBDP, students join a global network of learners dedicated to making a positive impact on the world.



FAST FACTS

DIPLOMA	IB DIPLOMA CIS + NEASC ACCREDITED DIPLOMA
SCHOOL YEAR STARTS	AUGUST
CLASS HOURS	10:00 AM - 16:50 PM (JAPAN STANDARD TIME)
MAJOR HOLIDAYS	SUMMER (8 WEEKS FROM MID-JUNE) WINTER (3 WEEKS FROM MID-DECEMBER)
APPLICATION PERIOD	PRIORITY ADMISSIONS: OCTOBER - DECEMBER GENERAL ADMISSIONS: YEAR ROUND
TIME TO GRADUATION	2 YEARS
STUDY METHOD	ONLINE - LIVE TEACHER TAUGHT LESSONS BLENDED WITH STUDENT-TEAM BASED AND INDEPENDENT LEARNING
LANGUAGE OF INSTRUCTION	ENGLISH

ENTRY CRITERIA

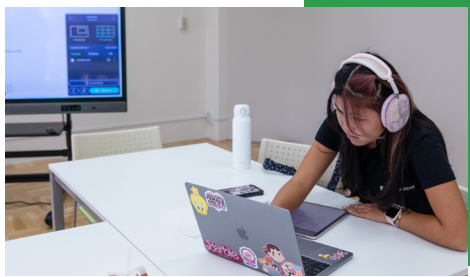
SCHOOLING	COMPLETION OF IB MYP OREQUIVALENT HIGH SCHOOL PREPARATORY CURRICULUM
LOCATION	RESIDENT IN A TIMEZONE WITHIN 3 HOURS OF JAPAN STANDARD TIME
ENGLISH LEVEL	HIGH SCHOOL LEVEL ENGLISH PROFICIENCY

*Detailed admissions policies and procedures can be found on our website.



EXPERT TEACHERS

Aoba's teachers are qualified to teach the IBDP and have years of experience delivering personalized, empowering education experiences to high school students around the world. Our teachers aren't just teachers: they are mentors, coaches, counselors, and our students' biggest advocates.



ENGAGING COURSES

Aoba Global Campus courses are designed using inquiry based learning frameworks and are differentiated to the needs of each student in order to challenge, engage, and connect students with each other and the world.



SOCIAL LEARNING

Online learning doesn't have to be lonely. Aoba Global Campus is all about teamwork, communication, and collaboration. Make friends from all around the world. Make friends for life.



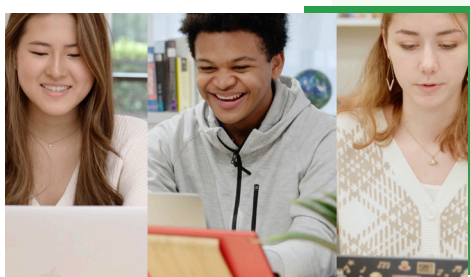
UNIVERSITY PREP

Aoba graduates go on to study at some of the world's top universities thanks to our hands-on, student centered university guidance support services. Discover yourself, develop your path, and Aoba will help you reach your goals.



CUTTING EDGE TECHNOLOGY

Online learning is driven by technology, and Aoba's is cutting edge. Students learn, create, and communicate using the most innovative and effective online learning tools, all brought together in the Aoba Global Campus platform.

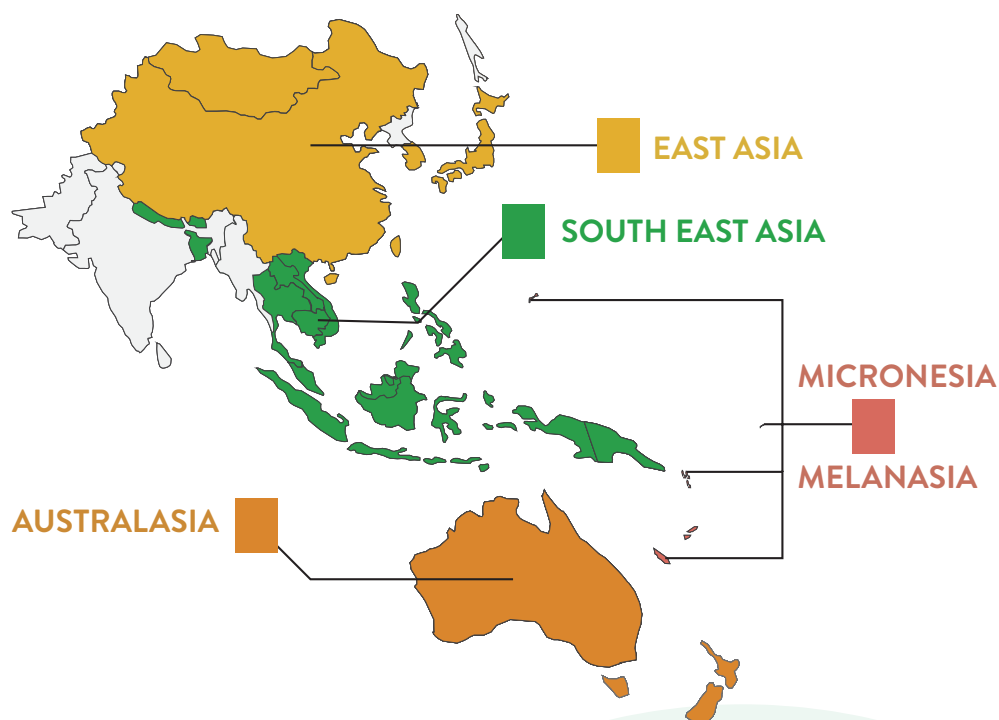


LOCATION FREE

At Aoba Global Campus, students can attend live classes, participate in school life, and achieve a globally recognized high school diploma entirely online, from the comfort of their own home.

REGIONS

Students residing in the following regions are currently eligible to study in the Aoba Online IB Diploma Programme:



AUSTRALASIA:

- AUSTRALIA
- NEW ZEALAND

MELANESIA:

- FIJI
- NEW CALEDONIA
- PAPUA NEW GUINEA

MICRONESIA:

- GUAM
- MICRONESIA
- SOLOMON ISLANDS
- TUVALU
- VANUATU

SOUTHEAST ASIA:

- BANGLADESH
- BHUTAN
- BRUNEI
- CAMBODIA
- INDONESIA
- LAOS
- MALAYSIA
- NEPAL
- PHILIPPINES
- SINGAPORE
- THAILAND
- TIMOR LESTE
- VIETNAM

EAST ASIA:

- CHINA (CERTAIN REGIONS)
- HONG KONG
- JAPAN
- MONGOLIA
- SOUTH KOREA
- TAIWAN

*Please contact our admissions department for questions relating to regional eligibility.



WHO IS THE ONLINE IBDP FOR?

- Students with an open minded, international outlook who want to join a global community of like minded peers while preparing to become a global leader.
- Motivated and high achieving students focused on entering into top global universities and laying a foundation for a successful post secondary pathway.
- Students who want to gain university credit as part of their high school studies.
- Students looking for a high level of personalized support from school faculty, including live classes, teacher office hours, university guidance and more.
- Students who want to learn in a fun and social environment while making lifelong friendships along the way.
- Globally mobile students and families who travel often or move between countries.
- Students living in remote areas with limited access to top tier international school programs.
- Students with an interest in Japanese culture and language: Aoba's Online IBDP features Japanese language courses and an optional Summer Study Abroad in Tokyo!
- Students who prefer the independence and efficiency of taking classes remotely.

HOW DOES ONLINE LEARNING WORK?

Students studying online at Aoba Global Campus join live classes with their peers led by expert international school teachers. Classes are organised around an easy to understand weekly timetable and joined with the click of a button via the Global Campus platform. Class sessions are thoughtfully organized into whole-class, team based, and independent learning modes in order to create an enjoyable and diverse learning experience.

The Global Campus platform neatly organizes and reminds students about upcoming events, deadlines and due dates so that they can stay relaxed, on-track, and focused on what matters.

Extracurriculars, clubs, and social interaction are also facilitated by community building, communication and collaboration tools inside the platform.

Parents and guardians are part of the conversation too: they receive updates and notifications from the school, connect with teachers, and view information about their child's learning journey via Aoba Global Campus.

Students can chat, meet, share, and build friendships online using their Aoba Profile Page and Aoba's social learning features; part of a safe and convenient internal school social network.

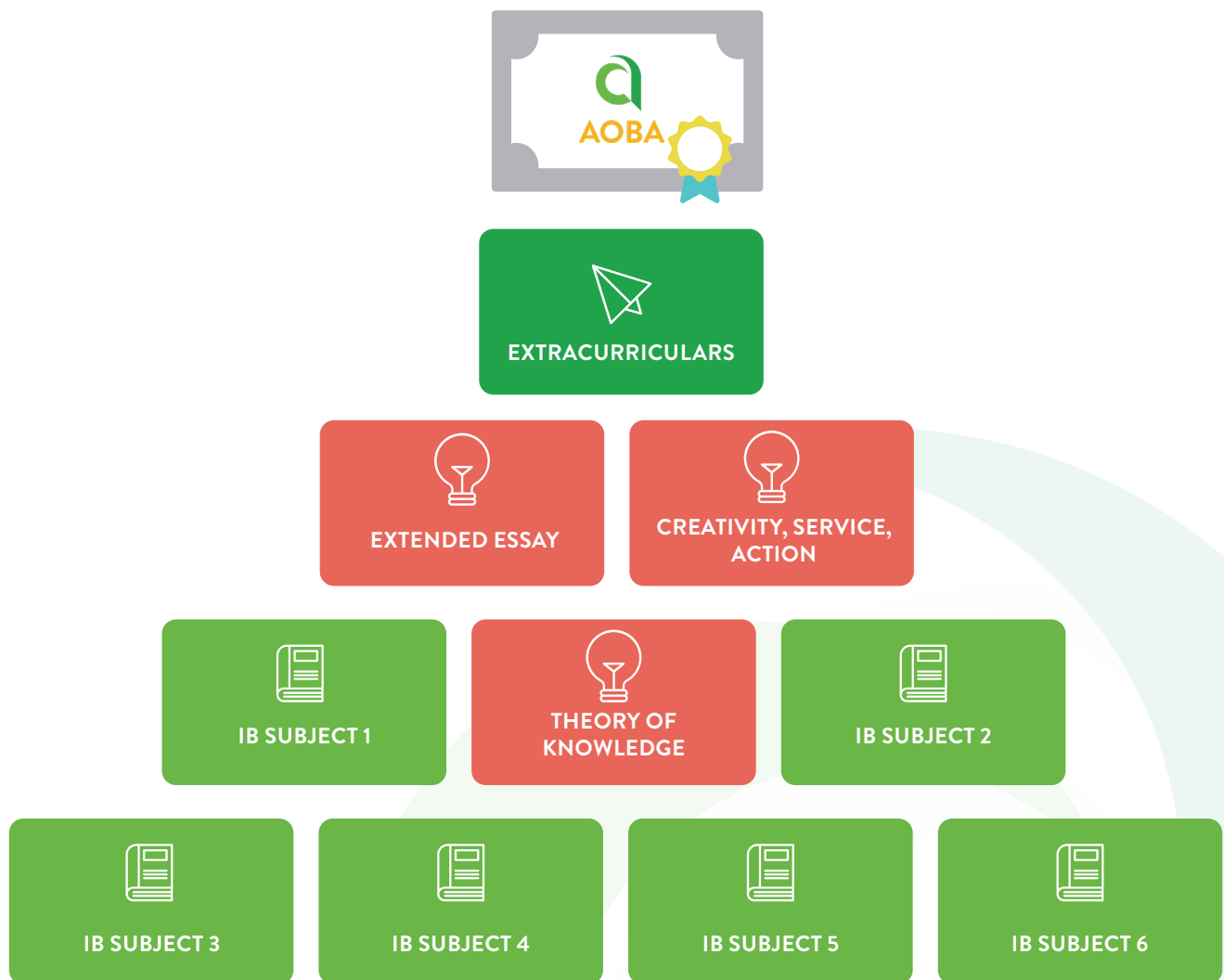
It all happens online at Aoba Global Campus.



PROGRAM DETAILS



CURRICULUM AND GRADUATION REQUIREMENTS



SUBJECT GROUPS

Students who pursue the IB Diploma must take six subjects: one each from Groups 1–5, and either one from Group 6 or a permitted substitute from one of the other groups, as described below. Three or four subjects must be taken at Higher level (HL) and the rest at Standard level (SL). The IB recommends a minimum of 240 hours of instructional time for HL courses and 150 hours for SL courses.

2025-2026 SCHOOL YEAR DP SUBJECT CATALOG

CORE (REQUIRED)

THEORY OF KNOWLEDGE (TOK)

CREATIVITY, ACTION AND SERVICE (CAS)

EXTENDED ESSAY (EE)

SUBJECT GROUPS (ONE FROM EACH)

GROUP 1: STUDIES IN LANGUAGE AND LITERATURE

LANGUAGE A: LANGUAGE & LITERATURE (ENGLISH)
LANGUAGE A: LANGUAGE & LITERATURE (JAPANESE)

GROUP 2: LANGUAGE ACQUISITION

LANGUAGE B: JAPANESE / LANGUAGE B: ENGLISH

LANGUAGE AB INITIO: JAPANESE

GROUP 3: INDIVIDUALS AND SOCIETIES

HISTORY

BUSINESS MANAGEMENT

GROUP 4: SCIENCES

BIOLOGY

*ENVIRONMENTAL SYSTEMS AND SOCIETIES

GROUP 5: MATHEMATICS

MATHEMATICS: ANALYSIS AND APPROACHES

MATHEMATICS: APPLICATIONS AND INTERPRETATION

GROUP 6: THE ARTS

VISUAL ARTS

SUBJECT DESCRIPTIONS

LANGUAGE A: LANGUAGE & LITERATURE

The course is organized into three areas of exploration and seven central concepts, and focuses on the study of both literary or non-literary texts. Together, the three areas of exploration of the course allow the student to explore the language A in question through its cultural development and use, its media forms and functions, and its literature. Students develop skills of literary and textual analysis, and also the ability to present their ideas effectively. A key aim is the development of critical literacy.

LANGUAGE B

The language B Standard Level (SL) and language B Higher Level (HL) courses are language acquisition courses for students with some previous experience of the target language. Students develop the ability to communicate in the target language through the study of language, themes and texts. In doing so, they also develop conceptual understandings of how language works. Communication is evidenced through receptive, productive and interactive skills across a range of contexts and purposes that are appropriate to the level of the course (and beyond those for language ab initio).

LANGUAGE AB INITIO:

The language ab initio course is a language acquisition course for students with no prior experience of the target language, or for those students with very limited previous experience. Students develop the ability to communicate in the target language through the study of language, themes and texts. In doing so, they also develop conceptual understandings of how language works. Communication is evidenced through receptive, productive and interactive skills across a range of contexts and purposes that are appropriate to the level of the course.

HISTORY

The Diploma Programme (DP) history course is a world history course based on a comparative, multi-perspective approach to history and focused around key historical concepts such as change, causation and significance. It involves the study of a variety of types of history, including political, economic, social and cultural, encouraging students to think historically and to develop historical skills. In this way, the course involves a challenging and demanding critical exploration of the past.

BUSINESS MANAGEMENT

The business management course is designed to develop students' knowledge and understanding of business management theories, as well as their ability to apply a range of tools and techniques. Students learn to analyse, discuss and evaluate business activities at local, national and international levels. The course covers a range of organizations from all sectors, as well as the socio-cultural and economic contexts in which those organizations operate.

BIOLOGY

Biologists investigate the living world at all levels using many different approaches and techniques. At one end of the scale is the cell, its molecular construction and complex metabolic reactions. At the other end of the scale, biologists investigate the interactions that make whole ecosystems function. Many discoveries remain to be made and great progress is expected in the 21st century.

*ENVIRONMENTAL SYSTEMS AND SOCIETIES

This subject can be counted towards both group 3 and group 4. Through studying environmental systems and societies (ES&S) students will be provided with a coherent perspective of the interrelationships between environmental systems and societies; one that enables them to adopt an informed personal response to the wide range of pressing environmental issues that they will inevitably come to face. The teaching approach is such that students are allowed to evaluate the scientific, ethical and socio-political aspects of issues.

MATHEMATICS: ANALYSIS AND APPROACHES, APPLICATIONS AND INTERPRETATION

The aims of these courses are to enable students to: develop mathematical knowledge, concepts and principles develop logical, critical and creative thinking employ and refine their powers of abstraction and generalization. Students are also encouraged to appreciate the international dimensions of mathematics and the multiplicity of its cultural and historical perspectives.

VISUAL ARTS

The visual arts are an integral part of everyday life, permeating all levels of human creativity, expression, communication and understanding. They range from traditional forms embedded in local and wider communities, societies and cultures, to the varied and divergent practices associated with new, emerging and contemporary forms of visual language.



SAMPLE SUBJECT SELECTIONS

The following two sample subject selections illustrate two possible Online DP pathways, curated from Aoba Global Campus' 2025-2026 DP subject catalog.

SAMPLE ONE: BILINGUAL DIPLOMA

- GROUP 1: LANGUAGE & LITERATURE (ENGLISH)
- GROUP 1: LANGUAGE & LITERATURE (JAPANESE)
- GROUP 3: HISTORY
- GROUP 3: BUSINESS MANAGEMENT
- GROUP 4: BIOLOGY
- GROUP 5: MATHEMATICS: ANALYSIS AND APPROACHES

SAMPLE TWO: SCIENCE FOCUS

- GROUP 1: LANGUAGE & LITERATURE (ENGLISH)
- GROUP 2: LANGUAGE B (JAPANESE)
- GROUP 3: ENVIRONMENTAL SYSTEMS AND SOCIETIES
- GROUP 4: BIOLOGY
- GROUP 5: MATHEMATICS: APPLICATIONS AND INTERPRETATION
- GROUP 6: VISUAL ARTS

CORE REQUIREMENTS

To be awarded an IB diploma, candidates must fulfill three core requirements, in addition to passing their subject examinations:

Extended Essay (EE). Candidates must write an independent research essay of up to 4,000 words in a subject from the list of approved EE subjects. The candidate may choose to investigate a topic within a subject they are currently studying, although this is not required. The EE may be written on an interdisciplinary topic.

Theory of knowledge (TOK). This course introduces students to theories about the nature and limitations of knowledge and provides practice in determining the meaning and validity of knowledge (critical thinking). TOK requires 100 hours of instruction, the completion of an externally assessed essay of 1600 words, and an internally assessed exhibition or presentation on the candidate's chosen topic.

Creativity, activity, service (CAS). CAS aims to provide students with opportunities for personal growth, self-reflection, intellectual, physical and creative challenges, and awareness of themselves as responsible members of their communities through participation in social or community work (service), athletics or other physical activities (activity), and creative activities (creativity).



ACHIEVE A BILINGUAL IB DIPLOMA

Aoba is proud to offer students the opportunity to achieve an English-Japanese Bilingual IB Diploma as part of the Online IB Diploma Programme. A variation of the IB Diploma, our Bilingual IB Diploma is available to students with proficiency in both English and Japanese.

As a Japan-based international school group, Aoba is committed to offering Japanese language pathways, and to supporting our Japanese speaking students in blending their home language and culture with enriching international education and the IB curriculum.

EARNING THE BILINGUAL IB DIPLOMA

Students may obtain the IB Bilingual Diploma by completing both years of Aoba's Online IBDP (Grades 11 and 12). Students follow the traditional curriculum for the IB Diploma in English, and must also achieve a minimum score of 3 in two Language A subjects from Group 1:

- Language A: Language & Literature (English)
- Language A: Language & Literature (Japanese)

By taking two Language A subjects from "Group 1", students are waived of the normal requirement to take a Language B subject from "Group 2".

BENEFITS

Achieving the Bilingual IB Diploma provides students with a number of benefits:

- **University Recognition:** Many universities require students to provide evidence of proficiency in the language of instruction. Aoba's Bilingual IB Diploma serves as proof of a student's proficiency in both English and Japanese proficiency, ensuring smoother university admissions. Universities also increasingly seek bilingual high school graduates and holding a Bilingual IB Diploma may provide a distinct advantage in the competitive application process.
- **Expanded University Choices:** With a Bilingual Diploma, students broaden the spectrum of universities they can consider and apply to, including international and multilingual degree programs: an increasingly popular option for students seeking to become international professionals.
- **Linguistic Versatility:** Proficiency in multiple languages enhances communication skills and intercultural awareness. Bilingualism opens doors to career opportunities where multilingualism is an asset.
- **Japanese Proficiency :** For Japanese students studying towards the IB Diploma in English, the opportunity to achieve a Bilingual IB Diploma allows them to maintain and deepen their proficiency in their native Japanese language throughout the course of their studies.



EXAMS

Having successfully completed all IBDP subject courses, students must pass their final IBDP exams in order to receive the full IB Diploma.

DP exams are sent to the IB in order to be externally assessed. Exams are most often sat in April or May of the final semester of the program, with results published in July.

As of the 2025 - 2026 school year, Aoba Global Campus online students must sit their IBDP exams in person at an authorised IB examination centre. Aoba and the IB cooperate to identify, select, and register online students for the examination center closest and most convenient to their place of residence. In most cases this can be achieved with a commuting distance of 1 hour or less.

JAPANESE LANGUAGE AND CULTURE

Aoba is an international school group with Japanese roots: our deep connectedness with Japan and Japanese culture and strong community relations allow us to deliver a robust Japanese language curriculum to all of our online students along with a variety of Japanese cultural immersion, exchange, travel and other activities.

As part of the Aoba Global Campus Online IBDP students can study Japanese to fulfill their IBDP Group 1 or Group 2 language requirements, or even pursue an English-Japanese Bilingual IB Diploma..

Whether native Japanese speakers, intermediate learners, or interested in beginning their Japanese language journey with an eye towards living and studying in (or just visiting!) Japan, our Online IBDP students can achieve their Japanese language learning dreams as part of their normal high school career.

Additionally, AGC After School Programs, Student Led Clubs, and Study Abroad Trips provide ample opportunity to explore all that Japan and Japanese culture have to offer: both online and in person.

EXTRACURRICULARS

A variety of optional afterschool programs, clubs, and other extracurricular activities are offered throughout the year.

These offerings include a mix of both free and paid activities scheduled at various times.

The specific extracurricular activities offered year on year are continually updated, and up to date extracurricular listings are finalised and shared with students and families prior to the beginning of each academic term so that they can browse, select, and enrol into their extracurriculars of choice via the Aoba Global Campus platform.

SUMMER STUDY ABROAD IN TOKYO

The Aoba Global Campus (AGC) Summer Study Abroad in Tokyo offers our online students a unique, immersive experience that bridges the gap between virtual learning and real-world connections. Designed to deepen cultural understanding and foster lasting friendships, this optional, one-week program invites AGC students to Tokyo for an enriching blend of language study, cultural exploration, and social activities. Set in the heart of Japan's vibrant capital, the program balances educational and recreational experiences, including visits to historic sites like Kamakura, group dinners, and city excursions.

Our vision is to create a meaningful and memorable experience that enhances students' global perspectives, while tying their educational journey back to the rich cultural roots of Japan and the Aoba community. This summer study abroad experience not only strengthens the sense of community among students but also provides an unforgettable cultural immersion that bridges the first and second years of their Online IB Diploma Programme.

KEY POINTS:

REGISTRATION WINDOW	AUGUST 2025 - DECEMBER 2025
PROGRAM DATE	JUNE 2026
DURATION	9 DAYS
LOCATION	TOKYO, JAPAN
TRAVEL TO JAPAN AND TOKYO	ARRANGED BY FAMILIES
TRAVEL, ACCOMMODATION, MEALS, ACTIVITIES IN TOKYO	ARRANGED BY THE SCHOOL AND INCLUDED IN PROGRAM FEE
PROGRAM FEES	PUBLISHED WHEN REGISTRATION OPENS



AFTER SCHOOL PROGRAMS

After School Programs (ASP) allow students to explore a particular area of interest while developing new skills and expanding their horizons in a fun and social online environment.

ASPs are delivered by qualified subject experts and are usually project based in nature, culminating in a final project and an Aoba credential (certificate of completion, digital badge) which students can publish to their personal portfolio.

Examples of ASPs offered on Aoba Global Campus include:

- Introduction to Web Design
- Creative Writing
- Digital Music Production
- Yoga
- Calligraphy

STUDENT LED CLUBS

Student Led Clubs (SLC) are a fantastic way for students to self organise and socialise around shared interests.

Students can select from and join a club of their choosing (or create a new one!) at the beginning of each academic term and attend club meetings at designated times throughout the week.

The Aoba Global Campus platform also provides students with a fun, convenient, and safe space to connect with friends around shared interests outside of normal school hours.

Examples of SLCs organised by students on Aoba Global Campus include:

- Esports and Gaming Club
- Monthly Book Club
- Fashion Club
- Film Club



INTERNSHIPS

Aoba works with our partner institution network, alumni community, and business contacts in order to develop virtual internship opportunities for online students.

Internships provide students with the opportunity to receive mentorship from professionals in various fields while gaining hands-on experience and adding to their personal portfolios.





HEALTH AND WELLBEING

Our Online IBDP features a unique Physical Health and Wellbeing course strand that empowers students to lead healthy, balanced lives. Through this course, students gain essential knowledge about physical health, nutrition, sleep hygiene, and mental wellbeing, equipping them with the skills to maintain a healthy lifestyle both during their studies and beyond. In addition to theoretical knowledge, this course actively promotes weekly physical activity, encouraging students to incorporate fitness into their routine, and allowing them to do so in a flexible manner according to their personal interests and abilities.

Aoba prioritizes the social, emotional, and psychological health of our online students by offering access to comprehensive counseling services. Students can schedule online appointments with qualified school counselors at their convenience, receiving professional support whenever needed. Additionally, our program is overseen by a dedicated Child Protection Officer who ensures the safety and wellbeing of all students. Every member of Aoba's school team is required to pass a thorough background check conducted by a third party agency, and must also complete rigorous and externally accredited Child Protection training and certification.

This holistic approach ensures that students are not only academically successful but also physically healthy, while our strong commitment to safeguarding and mental health nurtures their overall wellbeing throughout their academic journey, fostering lifelong habits for a balanced and fulfilling life.

CALENDAR AND SCHEDULE



FIRST DAY OF
SCHOOL



SCHOOL
BREAKS



LAST DAY
OF SCHOOL

August

S	M	T	W	T	F	S
						1 2
3	4	5	6	7	8	9
10	11	12	13	14	15	16
17	18	19	20	21	22	23
24	25	26	27	28	29	30
31						

September

S	M	T	W	T	F	S
	1	2	3	4	5	6
7	8	9	10	11	12	13
14	15	16	17	18	19	20
21	22	23	24	25	26	27
28	29	30				

October

S	M	T	W	T	F	S
			1	2	3	4
5	6	7	8	9	10	11
12	13	14	15	16	17	18
19	20	21	22	23	24	25
26	27	28	29	30	31	

November

S	M	T	W	T	F	S
						1
2	3	4	5	6	7	8
9	10	11	12	13	14	15
16	17	18	19	20	21	22
23	24	25	26	27	28	29
30						

December

S	M	T	W	T	F	S
	1	2	3	4	5	6
7	8	9	10	11	12	13
14	15	16	17	18	19	20
21	22	23	24	25	26	27
28	29	30	31			

January

S	M	T	W	T	F	S
						1 2 3
4	5	6	7	8	9	10
11	12	13	14	15	16	17
18	19	20	21	22	23	24
25	26	27	28	29	30	31

February

S	M	T	W	T	F	S
1	2	3	4	5	6	7
8	9	10	11	12	13	14
15	16	17	18	19	20	21
22	23	24	25	26	27	28

March

S	M	T	W	T	F	S
1	2	3	4	5	6	7
8	9	10	11	12	13	14
15	16	17	18	19	20	21
22	23	24	25	26	27	28
29	30	31				

April

S	M	T	W	T	F	S
			1	2	3	4
5	6	7	8	9	10	11
12	13	14	15	16	17	18
19	20	21	22	23	24	25
26	27	28	29	30		

May

S	M	T	W	T	F	S
						1 2
3	4	5	6	7	8	9
10	11	12	13	14	15	16
17	18	19	20	21	22	23
24	25	26	27	28	29	30
31						

June

S	M	T	W	T	F	S
	1	2	3	4	5	6
7	8	9	10	11	12	13
14	15	16	17	18	19	20
21	22	23	24	25	26	27
28	29	30				

July

S	M	T	W	T	F	S
			1	2	3	4
5	6	7	8	9	10	11
12	13	14	15	16	17	18
19	20	21	22	23	24	25
26	27	28	29	30	31	

DAILY TIMETABLE

ONLINE IBDP WEEKLY TIMETABLE (STUDENT SAMPLE)						
JAPAN TIME	MONDAY	TUESDAY	WEDNESDAY	THURSDAY	FRIDAY	
10:00 - 12:00	PERIOD 1	PERIOD 1	PERIOD 1	PERIOD 1	PERIOD 1	
12:00 - 12:10	BREAK					
12:10 - 14:10	PERIOD 2	PERIOD 2	PERIOD 2	PERIOD 2	PERIOD 2	
14:10 - 14:50	LUNCH					
14:50 - 15:50	PERIOD 3	PERIOD 3	ADVISORY	PERIOD 3	ADVISORY	
15:50 - 16:50			EARLY RELEASE		ASSEMBLY	
16:50 - 17:00	BREAK		EARLY RELEASE	BREAK		
17:00 - 18:00	ASP AND CLUBS			ASP AND CLUBS		

A DAY IN THE LIFE OF AN ONLINE IBDP STUDENT

*This is a sample day for indicative purposes only, as class options and scheduling may vary

RISE AND SHINE

Wake up, enjoy a healthy breakfast, and prepare for the day ahead! Simply turn on your computer, login, and begin learning. No rush hour commute required!

10:00 AM | PERIOD 1

Join your first class of the day with the click of a button. Starting off with a whole-class get together, seamlessly move between virtual breakout rooms for team based activities, independent study, and to receive personalized support from your teacher.

12:00 PM | BREAK

Grab a snack, stretch your legs, and prepare for your next class period.

12:10 | PERIOD 2

Time for some more learning!

14:10 | LUNCH

Take some time to relax and enjoy lunch at home or wherever you happen to be. Chat with friends online, sneak in a quick gaming session, go for a jog, read a book, or whatever else you'd like.

14:50 | PERIOD 3

Your last class of the day: stay strong!

16:50 | SCHOOL DAY ENDS

If you don't have any extracurriculars scheduled then feel free to log off and get on with the rest of your day: we'll see you tomorrow! If you'll be joining an After School Program or Student Led Club, take a bit to unwind and grab something to drink.

17:00 | EXTRACURRICULARS

If you've signed up for an After School Program, are part of a club, or attending some other extracurricular then enjoy wrapping up your day in a more casual, social online setting while gaining new skills and strengthening friendships.

TWO YEAR PROGRAM SCHEDULE

GRADE 11 : SEMESTER 1

- Program commences
- Intro to University Guidance program
- Intro to CAS
- Intro to EE

GRADE 11 : SEMESTER 2

- Complete university and post-secondary pathway plan
- Begin EE research
- TOK Individual Presentation
- Submit EE first draft

SUMMER BETWEEN GRADE 11-12

Complete EE final draft
Continue CAS activities and reflections
Optional Summer Study Abroad in Tokyo

GRADE 12 : SEMESTER 1

- University applications submitted
- Submit EE final draft
- TOK Essay
- Receive predicted IBDP scores
- Complete TOK course
- CAS activities and reflections completed

GRADE 12 : SEMESTER 2

- DP Mock Exams
- All SL coursework completed
- DP Final Exams (3-weeks)
- Graduation
- Exams sent to IBO
- Exam results received during first week of July from the IBO



GRADUATION

Aoba Global Campus Online IBDP graduates will receive their Aoba high school diploma as part of an exclusive, fully online graduation ceremony at the end of the two year program.

A physical, paper copy of the high school diploma will also be mailed individually to each student's home address.

IB Diplomas will be delivered to students upon successful confirmation of their final examination results.

This event will be recorded, and can also be attended and viewed LIVE by students' family and friends.

Aoba Global Campus faculty and the Aoba Group Head of School will present students with their diplomas, deliver special awards, and celebrate our graduates' success.

KEY TO UNIVERSITY



ACCREDITED AND RECOGNIZED

Aoba-Japan International School's high school diploma is accredited by the Council of International Schools and the New England Association of Schools and Colleges. The IB Diploma is further certified by the International Baccalaureate Organisation. This globally recognized, overlapping accreditation framework ensures that Aoba graduates aren't just eligible to enter into top universities around the world: they are viewed among the most favorable and competitive candidates by leading university admissions departments.



LIST OF UNIVERSITY ACCEPTANCES

FIND YOUR DREAM UNIVERSITY. MAKE IT YOUR REALITY.

Aoba graduates go on to study at top global universities, including the following.

JAPAN

Hosei University
ICU
Keio University
Kyoto School of Culinary Art
Kyoto University of Advanced Science
Meiji Gakuin University
Nagoya University
Okayama University
Osaka University
Sophia University
Ritsumeikan University
Temple Japan
Tohoku University
Tokyo College of Music
Tokyo International University
Tsukuba University
University of Tokyo
Waseda University

CHINA

Chinese University of Hong Kong
Hong Kong University
New York University (Shanghai)
Soochow University
Southern University
University of Hong Kong

TURKEY

Bahçeşehir University

AUSTRALIA

Australian National University
Monash University
University of Canberra
University of Melbourne
University of New South Wales
University of Sydney
University of Wollongong

UNITED STATES

Carnegie Mellon University
College of William and Mary, VA
Creighton University, NE
CSU Fullerton, CA
Duquesne University
Lehigh University
Michigan State University
Northeastern University
Ohio University
Otis College of Art and Design, CA
Pennsylvania State University: Smeal
Purdue University
Rochester Institute of Technology
San Diego State University
San Jose State University
Santa Monica College
Sarah Lawrence College, NY
Stony Brook University
Syracuse University
The Citadel, The Military College of South Carolina
The Culinary Institute of America
The Pennsylvania State University
University of Arizona
University of California, Berkeley
University of California, Davis
University of California, Irvine
University of California, San Diego
University of California, Santa Barbara
University of California Santa Cruz
University of Chicago
University of Denver
University of Houston
University of Illinois Urbana-Champaign
University of Massachusetts Amherst
University of Michigan-Ann Arbor
University of Michigan, Flint
University of San Francisco
University of St. Thomas Minnesota
University of Wisconsin-Madison
University of Washington
University of Wisconsin

BRAZIL

Pontifícia Universidade Católica do Paraná

CANADA

Capilano University
McGill University
Mount Allison University
Simon Fraser University
University of British Columbia
University of Brunswick
University of Saskatchewan
University of Toronto

UNITED KINGDOM

Aberystwyth University
Aston University
Edinburgh University
Imperial College London
Keele University
King's College London
Leeds Beckett University
Manchester University
Newcastle University
Nottingham Trent University
Queen Mary University of London
Saint Andrew's University
SOAS University of London
University College London
University of Bath
University of Birmingham
University of Bristol
University of East Anglia
University of Glasgow
University of Huddersfield
University of Kent
University of Leeds
University of Leicester
University of Manchester
University of Portsmouth
University of Salford
University of Sheffield
University of Southampton
University of Sussex
University of York

BELGIUM

Vrije Universiteit Brussel
Katholieke Universiteit

NETHERLANDS

Amsterdam Business School
Tilburg University
University of Amsterdam

CZECH REPUBLIC

Charles University

UNIVERSITY GUIDANCE

Aoba Global Campus full time high school programs incorporate a strand of university and postsecondary guidance for all students.

Facilitated by Aoba teaching faculty and spanning the duration of their high school career at Aoba, students engage in a variety of self discovery, university research, portfolio building, and application activities.

Aoba leverages a powerful and convenient software platform, BridgeU, in order to best organize these activities, support students, and ensure that university application deadlines are met.

The BridgeU platform is connected with Aoba Global Campus and ensures that parents and guardians also have transparency into their child's postsecondary guidance activities in order to support them at home as needed.

Aoba's mission is to help students discover their passions and strengths, develop personal goals around these, and plan a successful postsecondary career that empowers them to fulfill these goals. While most of our high school graduates enter top global universities immediately after receiving their Aoba diploma, other successful graduates have gone on to start their own businesses, volunteer abroad, or engage in other personal or professional pursuits straight out of high school.

WHATEVER YOUR “WHY”, AOBA IS COMMITTED TO GETTING YOU THERE.

Guidance activities include:

- Career Exploration
- University Exploration
- University Application Support
- University Fairs
- Essay Writing Workshops
- Information Sessions

FREQUENTLY ASKED QUESTIONS



FREQUENTLY ASKED QUESTIONS

CAN I ENROL AT ANY TIME?

The first year of Aoba's Online IBDP begins mid-August, with the normal application period running until mid-July. In some cases, it may be possible for IBDP students to transfer into our Online IBDP within the first year (G11), or at the start of the second year (G12). These instances will be handled on a case by case basis and our admissions team will advise on eligibility and requirements. In some cases students may need to make up work, take extra classes, or complete other activities in order to graduate on time, but Aoba is committed to supporting each student and families unique situation to the best of our ability.

WHAT TECHNOLOGY DO STUDENTS NEED TO PARTICIPATE IN THE PROGRAM?

In order to participate in live online classes and access digital learning content on the Aoba Global Campus platform, students will need a high speed internet connection (recommended 250mbps or better) and a device on which web browser software (eg. Chrome, Safari, Firefox, Edge) can be installed. All learning interactions and content are accessed over the internet via a web browser. Although it is possible to engage in Aoba's online learning environment via a smartphone or tablet, Aoba recommends that students use a laptop or desktop computer for the majority of their studies as this will provide the smoothest technology experience, make accessing learning content easier, and is more ergonomic and healthy than studying exclusively through small screen such as a smartphone.

DOES THE PROGRAM CONSIST OF LIVE CLASSES OR INDEPENDENT STUDY?

Both! While many online schools are based around a "do it all by yourself" model, Aoba's Online IBDP thoughtfully blends live group classes, team based activities, and independent study to achieve just the right mix of learning modes, human connection, and screen time.

WHAT KIND OF SUPPORT DO ONLINE STUDENTS RECEIVE?

In short, Aoba aims to provide online students with the same hands on, personalized support that students of our on campus programs receive. This includes structured post-secondary and university guidance, access to school counseling staff, a dedicated homeroom advisor, teacher office hours, and much more.

Aoba's Online IBDP is more than just an online course platform: it's an entire international school experience delivered right to students and families wherever they are.

ARE EXTRACURRICULAR AND ENRICHMENT OPPORTUNITIES AVAILABLE FOR ONLINE STUDENTS?

Yes! It wouldn't be school without the opportunity to pursue personal interests, develop unique skills, and socialize with other students. Aoba's Online IBDP provides students with a variety of optional enrichment opportunities including After School Programs, Student Led Clubs, school trips, and internships. Some activities like trips require additional fees for transportation and accommodation, but because our goal is to make the IBDP 100% accessible via online study these activities are completely optional and not required to graduate from the program. It's all about providing students and families with as much choice and variety as possible.

FREQUENTLY ASKED QUESTIONS

HOW ARE IB EXAMS TAKEN?

As of 2024, IBDP final examinations are paper-based and must be taken in person. As students approach the end of their journey in the IBDP, Aoba will coordinate with the IBO to locate the nearest local examination center to a student's place of residence. This is often a local high school in the student's country of residence and in most cases, travel time to and from the exam center can be limited to one hour or less.

WHEN ARE IB EXAMS AND HOW ABOUT THE GRADUATION CEREMONY?

The majority of our students take their final IB examinations in April and May of the second and final year of the Online IBDP (Grade 12). Shortly thereafter students celebrate their achievement at our online graduation ceremony. Students may also optionally attend our in-person graduation ceremony in Tokyo, Japan (additional fees apply). For those students unable to sit their IB exams at this time, Aoba will help to schedule exams at a later date. The next available examination dates offered by the IBO are in Fall, around October. Students may still attend graduation ceremonies and related activities even if unable to sit their exams in April/May, assuming they have met basic graduation requirements.

ARE PARENTS AND GUARDIANS ABLE TO COMMUNICATE WITH THE SCHOOL AND THEIR CHILD'S TEACHERS?

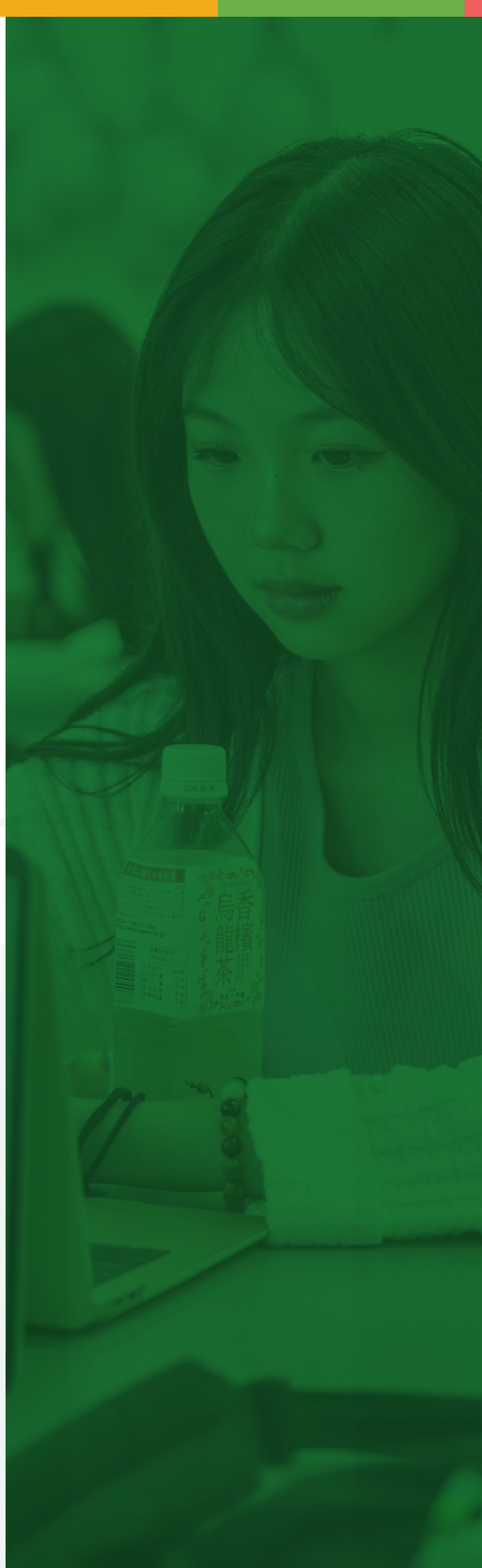
Yes! We encourage parents and guardians to take an active role in their child's school life. Parents and guardians receive regular communications from teachers and the school with regards to support for their child, academics, events, and other school life related activities. Parents and guardians also have the opportunity to join our Global Family Community: a social network designed just for families.

HOW DOES AOBA ENSURE A SAFE AND SECURE ONLINE LEARNING ENVIRONMENT?

Aoba Global Campus is designed from the ground up with safety, security, and privacy in mind specific to the needs of K12 students and their families. Students can only interact with their peers and with school faculty and staff. Communications tools like video conferencing and chat are monitored and include reporting features to ensure students are protected. In addition to our secure technology environment, Aoba's curriculum and school culture emphasises respectful interactions both on campus and online, resulting in a supportive and inclusive school community that doesn't tolerate cyberbullying and takes assertive action to address any concerns. School is school, whether online or in-person, and is a place where everyone should feel safe and supported.

TO SEE MORE FREQUENTLY ASKED QUESTIONS, PLEASE VISIT US AT [HTTPS://LEARN.AOBAJAPAN.JP/PATHWAY/IB-DP](https://learn.aobajapan.jp/pathway/ib-dp) AND CLICK ON THE FAQ BUTTON TO SEE A MORE COMPREHENSIVE LIST.

SCHOOL FEES 2024-2025



SCHOOL FEES 2024-2025

ONLINE IBDP

AUGUST 2024 TO
JUNE 2025

All tuition and fees denominated in Japanese Yen

ONE TIME FEES

<NEW STUDENTS ONLY>		TAX INCLUDED
APPLICATION FEE	PAYABLE AT THE TIME OF APPLICATION.	¥25,000
REGISTRATION FEE	PAYABLE AT THE TIME OF REGISTRATION.	¥200,000

ANNUAL FEES

<PAYABLE FOR THE WHOLE SCHOOL YEAR WITH THE FIRST TUITION INVOICE. NOT DIVIDED FOR MID-YEAR ENTRY>		
TECHNOLOGY FEE	PAYED WITH THE FIRST YEARLY TUITION INSTALLMENT.	¥70,000
ONLINE GRADUATION FEE	G12 ONLY IF AN ONLINE STUDENT WISHES TO ATTEND AOBA'S IN-PERSON GRADUATION CEREMONY IN TOKYO, A SEPARATE FEE WILL APPLY.	¥50,000
DP EXAM FEE	G12 ONLY PAYABLE UPON INVOICE. *AMOUNT IS SUBJECT TO CHANGE DUE TO IB REGISTRATION FEE AND/OR EXCHANGE RATE.	¥120,000*

<PAYABLE IN TWICE YEARLY INSTALLMENTS>		
YEARLY TUITION	PAYED IN TWICE YEARLY INSTALLMENTS.	¥1,650,000

<DISCOUNTS>		
SIBLING DISCOUNT	THE SIBLING DISCOUNT APPLIES TO FAMILIES THAT ENROLL A SECOND CHILD AT A-JIS, WHO WILL BE GRANTED A 10% DISCOUNT ON THE SECOND CHILD'S YEARLY TUITION FEES. A TUITION DISCOUNT OF 15% WILL BE APPLIED TO ANY SUBSEQUENT SIBLINGS. THIS DISCOUNT APPLIES TO FULL TIME STUDENTS ONLY, WHO HAVE ATTENDED THE ENTIRE ACADEMIC YEAR OF SCHOOL, AND IS ADJUSTED IN THE LAST TUITION PAYMENT OF THE SCHOOL YEAR.	TUITION 10% DISCOUNT



YOUR JOURNEY BEGINS HERE

APPLY NOW

admissions.global@aobajapan.jp

learn.aobajapan.jp

